



Delta Media Server

Change Delta User Expiry

User Guide



Change Delta User Expiry : User Guide

Trademark Information

Delta Media Server is a trademark of 7thSense Design Ltd. Brand or product names may be registered trademarks of their respective owners. Windows is a registered trademark of Microsoft Corporation in the United States and other countries.

Copyright Information

All Rights Reserved. This document is copyrighted © by 7thSense Design Ltd and shall not be reproduced or copied without express written authorisation from 7thSense Design Ltd.

The information in this document is subject to change without notice. 7thSense Design Ltd assumes no responsibility for errors, and/or omissions contained in this information.

Printed: December 2020

This edition is for software version CDUE 1.0
Document ref.: M242-3

E: info@7thsense.one
W: 7thsense.one

7thSense Design Ltd
2 The Courtyard, Shoreham Road
Upper Beeding
Steyning
West Sussex
BN44 3TN
UK

T: +44 (0) 1903 812299

7thSense Design LLC, Michigan
332 E Lincoln Ave
Suite 100
Royal Oak, MI 48067
USA

T: +1 248 599 2717

7thSense Design LLC, Orlando
4207 Vineland Rd
Suite M1
Orlando, FL 32811
USA

T: +1 407 505 5200

Change Delta User Expiry	4
Generate New Update Code	4
Updating Delta with new Code	6
Document Information	7
Index	8

Change Delta User Expiry

Change Delta User Expiry is a licensed tool that provides an additional layer of control for Delta software licence providers and resellers. For example, an integrator can add an expiry date during a site build, and make a licence permanent upon approval and sign-off. The process builds a unique code element into each Delta software licence, which only they can manage.

What's Required?

- **Change Delta Expiry** software and Licence for this software, and
 - a Windows machine on which to install it
- Delta Version 2.4 Build 31 or later
- Initial update to Licence from 7thSense if Licence predates May 2017.

Generate New Update Code

Once installed, the software can be started from the default location:

C:\Program Files\7thSense\7thChangeDeltaUserExpiry\7thChangeDeltaUserExpiry.exe

Change Delta User Expiry Software Interface

7thSense - Change Delta User Expiry

Customer ID 65535 Done

Dongle Number 0

Next ID 0

Expiry Date 10052017 DDMMYYYY Make Permanent Generate Update Code

Update Code

Customer ID

This unique customer identifier ensures customers can only edit the expiry of their own servers. All licences sold have this id embedded within them, and will only allow updates generated from software with the corresponding ID to change their expiry dates.

Dongle Number

This is a unique number for each dongle licence and is required for any update the user wishes to generate.

Next ID (Next Update ID)

This is an incremental id number to track updates to the licence. The current id is required to generate a new update.

Expiry Date

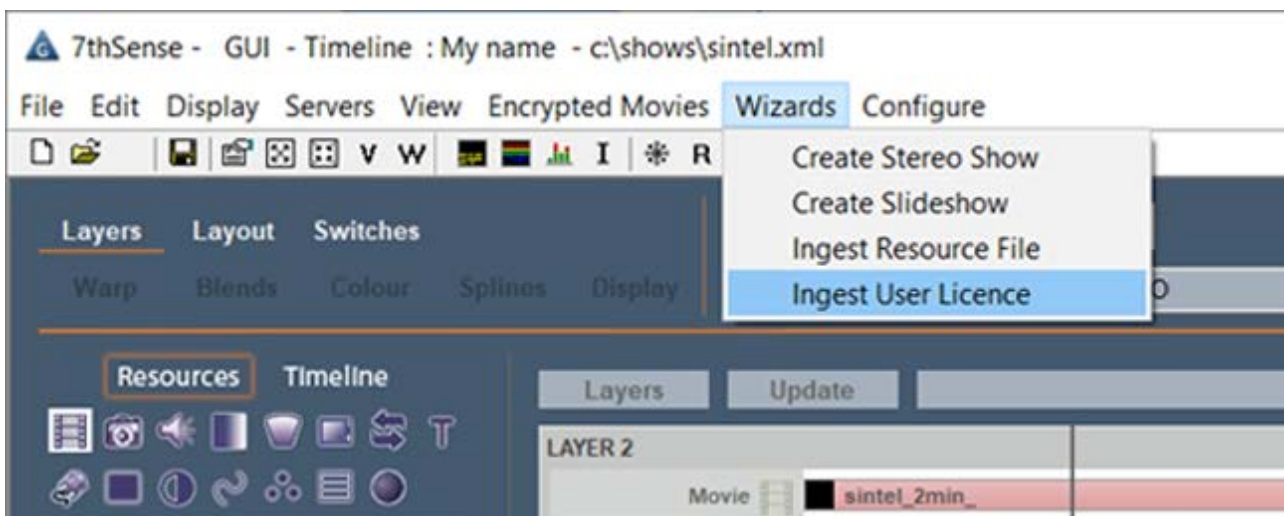
Enter the new required licence expiry date in the format: DDMMYYYY

Make Permanent

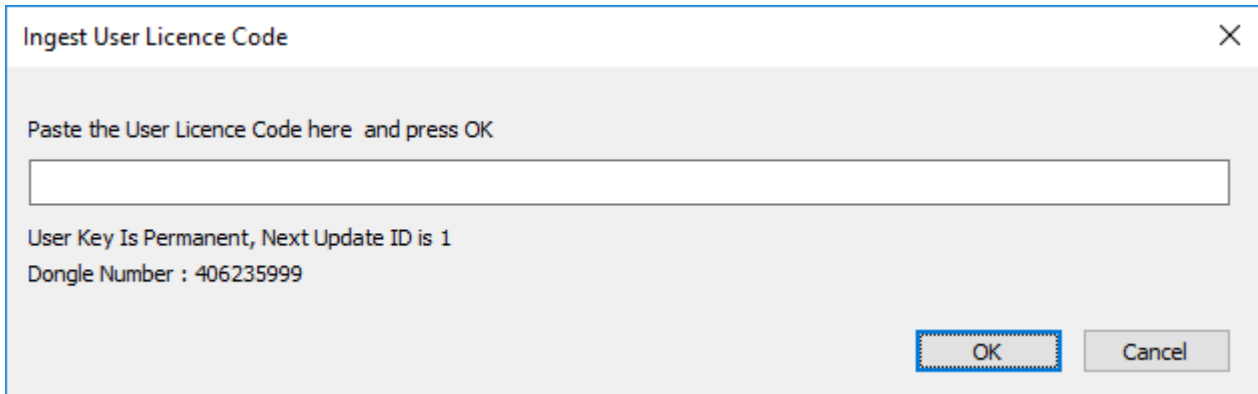
This checkbox disables the 'Expiry Date' field to produce a permanent licence.

Where to Find Your Codes

The Dongle number and Next Id (Next Update Number) can be found in the Ingest User Licence dialog of DeltaGUI:



This will bring up a dialog displaying the Dongle number and Next update ID for the currently selected server:



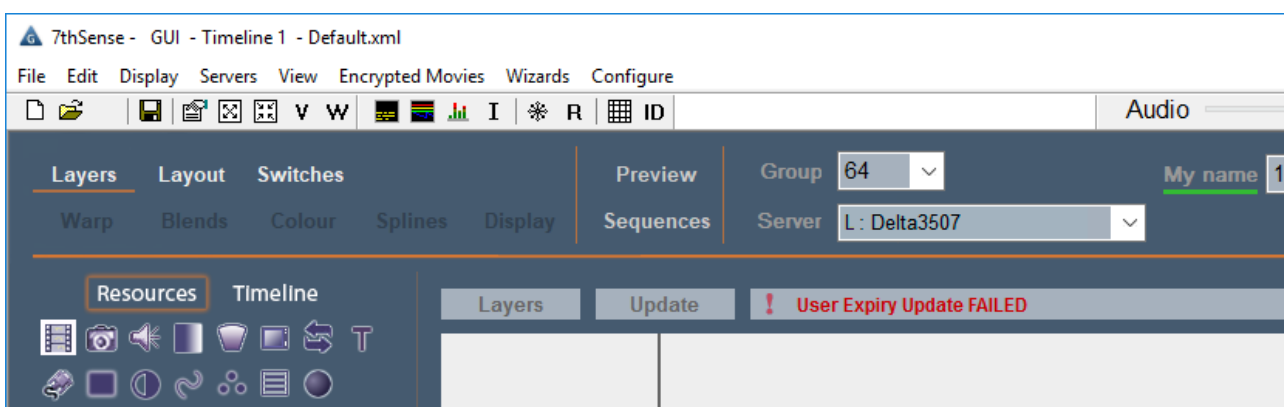
Generate the Update Code

When all change details are complete, click the 'Generate Update Code' button and a code will appear in the 'Update Code' field below. This code now needs to be entered into Delta to complete the update process.

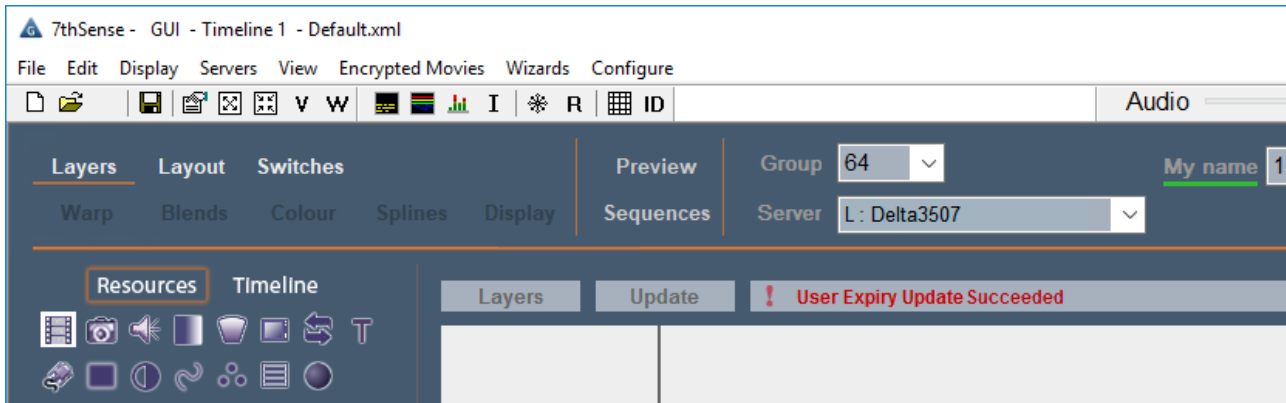
Updating Delta with new Code

To update a server's licence with a generated code, go to the update dialog in DeltaGUI by navigating to the *Wizards > Ingest User Licence* from the top menu bar. Enter the update code into the text field in the dialog and hit 'OK'.

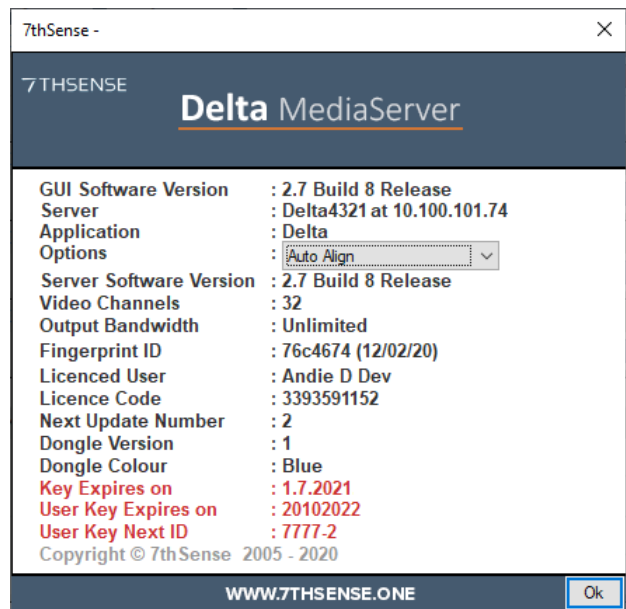
If there is a problem with the code, ingest will fail, with this message in the DeltaGUI status bar:



Otherwise, you should see that it has succeeded:



To ensure the changes applied are correct, navigate to the about dialog in the check that in the about dialog by navigating to *Help > About GUI*. Additional fields for 'User key expires on' and 'User Key Next ID' appear after the expiry change. Here is before and after:



Document Information

Date	Document Edition	Software Version	Revision details	Author/Editor
May 2017	1	1.0	First Release	Matt Jones
February 2020	2	1.0	Updated to reflect Fingerprint ID	Andie Davidson
July 2020	3	1.0	Revised server terminology	Andie Davidson

A

apply update code to Delta 6

G

generate update code 4

E: info@7thsense.one
W: 7thsense.one

7thSense Design Ltd
2 The Courtyard, Shoreham Road
Upper Beeding
Steyning
West Sussex
BN44 3TN
UK

T: +44 (0) 1903 812299

7thSense Design LLC, Michigan
332 E Lincoln Ave
Suite 100
Royal Oak, MI 48067
USA

T: +1 248 599 2717

7thSense Design LLC, Orlando
4207 Vineland Rd
Suite M1
Orlando, FL 32811
USA

T: +1 407 505 5200