

Installing an Adrienne PCIe Time Code Card

Download the latest driver for the Adrienne PCIe TC card which can be found at <http://www.adrielec.com/Downloads.htm>

The latest driver can be found under the **PCIe-TC Files (PCI Express)** heading on Adrienne Electronics website.

Download the zip driver file to your desktop (or your desired location) and unzip the file.

In the past it was recommended that you move the sdbus.inf and sdbus.pnf files from the C:\WINDOWS\inf directory, you no longer need to perform this step and it is no longer recommended to do so by Adrienne Electronics

Install the Adrienne PCIe TC card into an available PCIe slot.

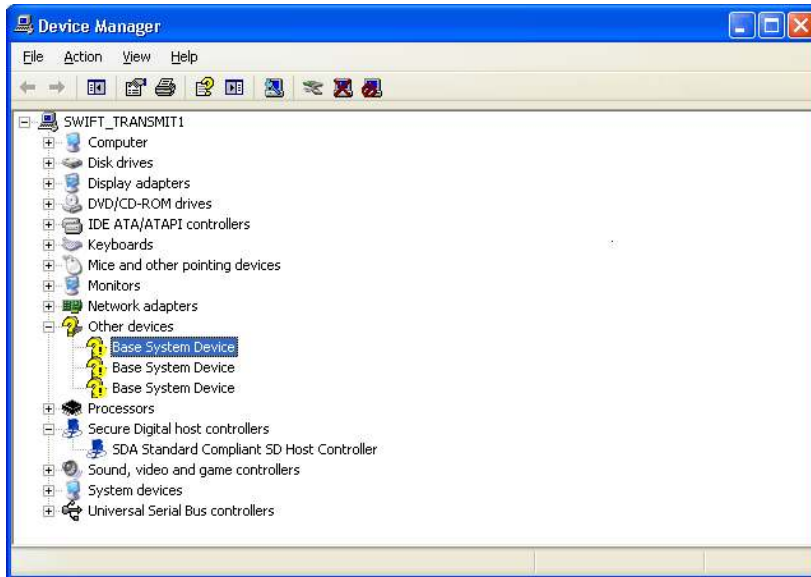
Start your system, Microsoft will find "New Hardware" a total of four (4) New Hardware will be found.

There will be three (3) Base System Devices and one (1) SDA Host Controller (the naming may vary).

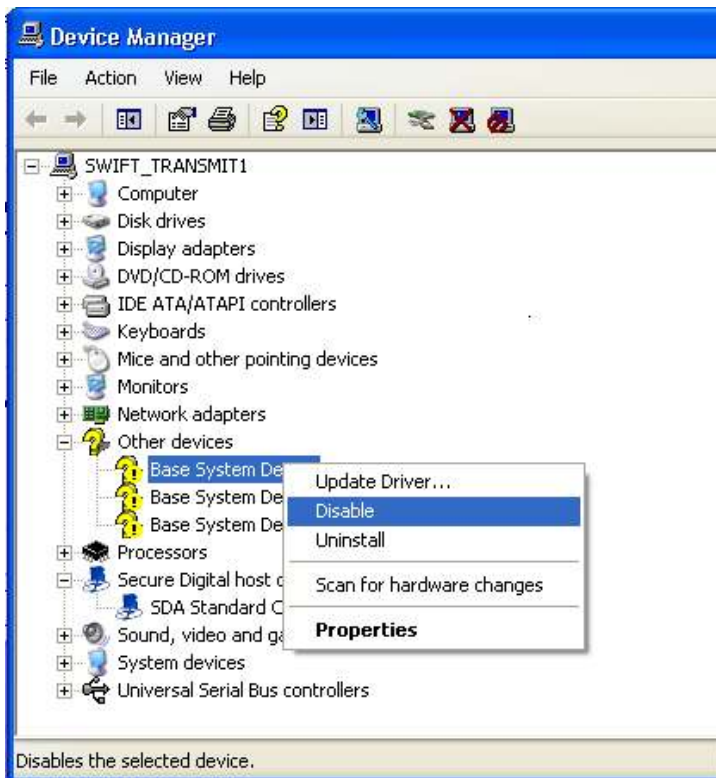


Open Device Manager and perform the following steps

You will see the Base System Devices under Other devices



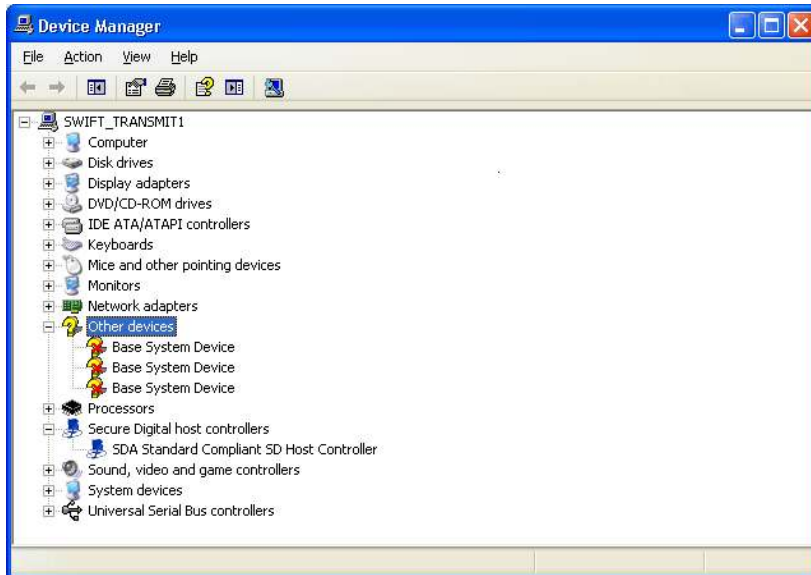
Right Click on each Base System Device and disable them, you no longer need to install the NULL driver for these devices. These devices are not used.



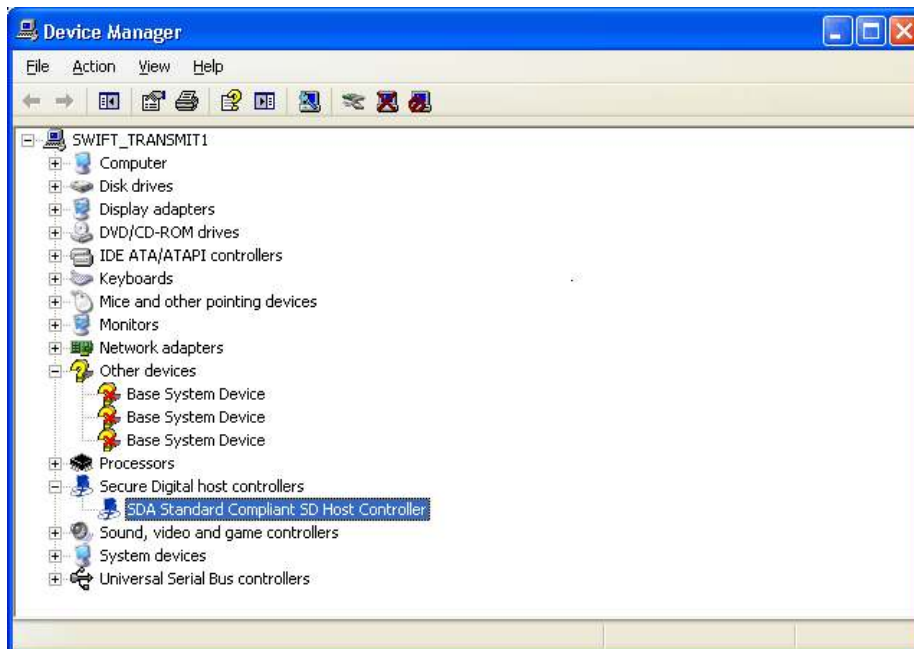
You will be warned that by disabling the device, the device will no longer function. Click Yes to disable the device



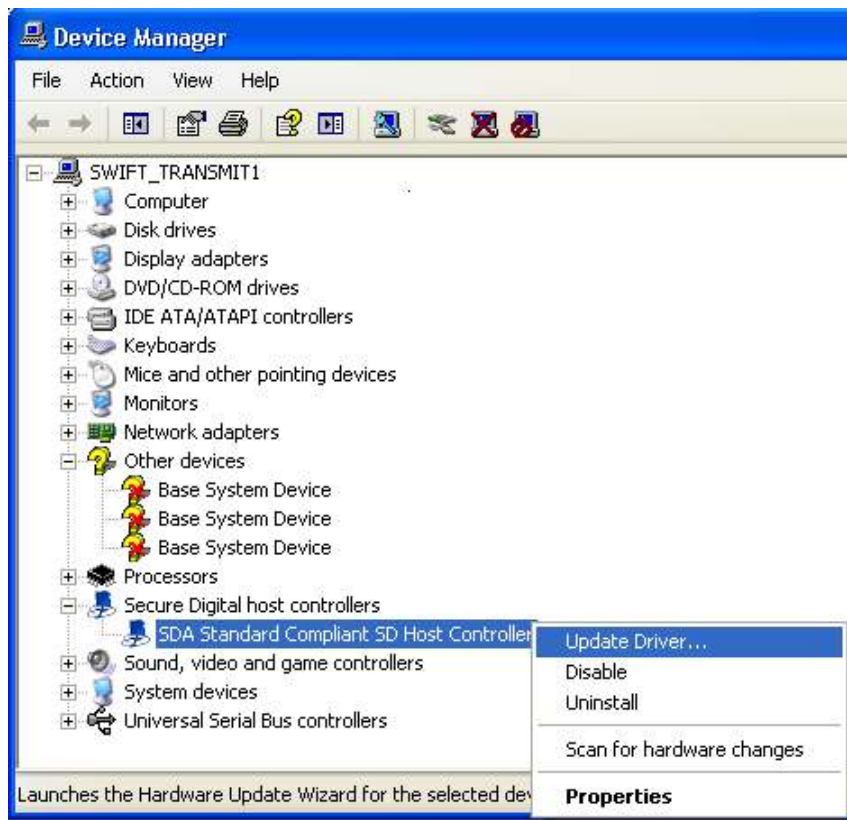
Repeat this procedure for all Base System Devices



The SD Host Controller is the Adrienne PCIe TC Card which requires the Adrienne Driver.



Right click on the SD Host Controller and Select Update Driver (the next steps are very important, DO NOT allow Microsoft to install the driver).

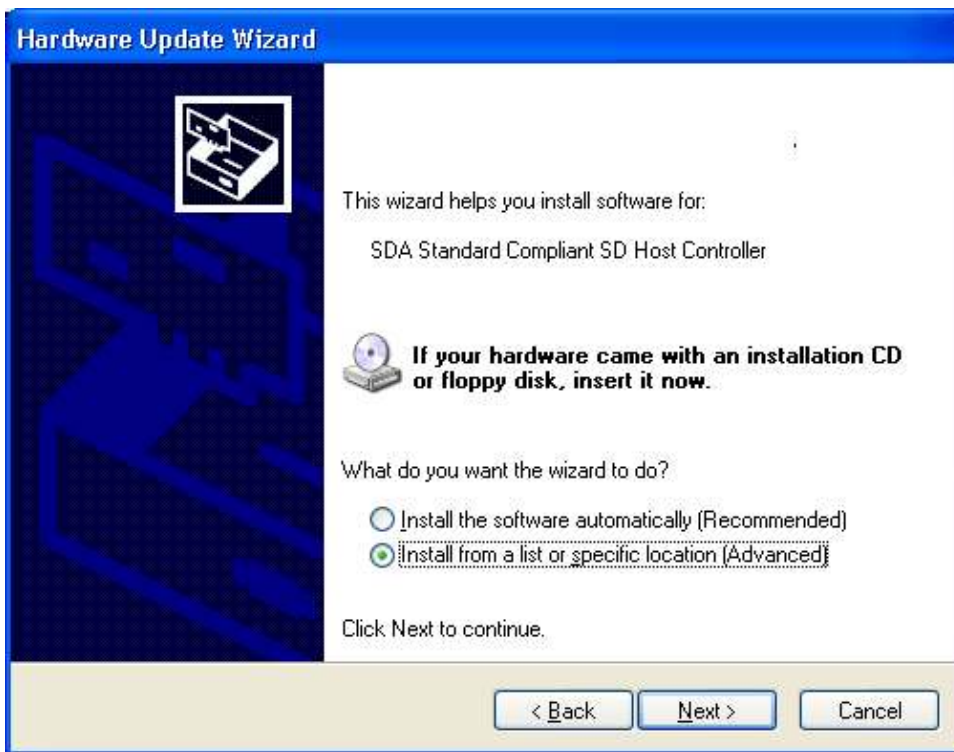


The Hardware Update Wizard will launch

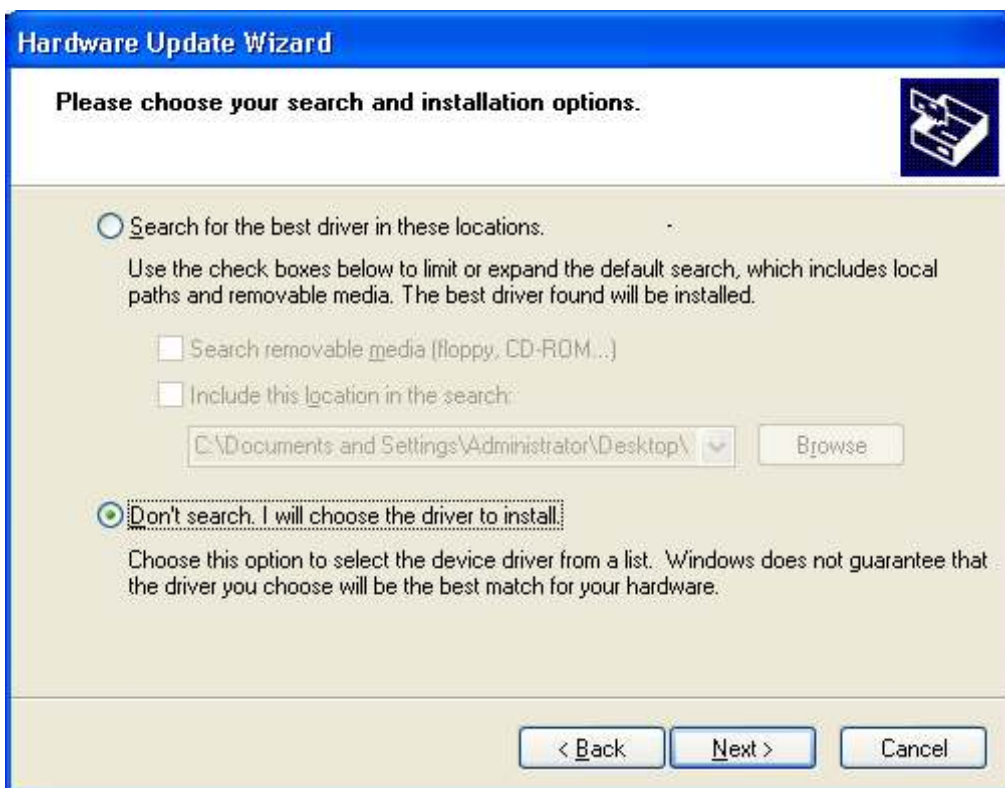
On the first screen select No, not this time click Next



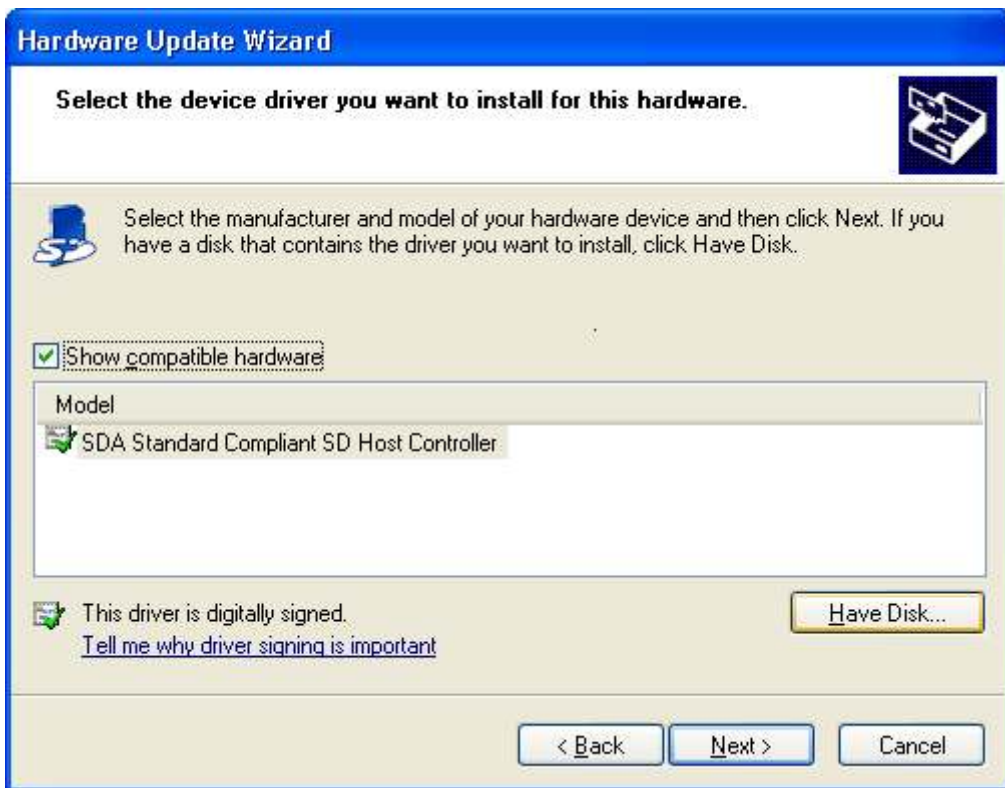
On the second screen select Install from a list or specific location (Advanced), click Next



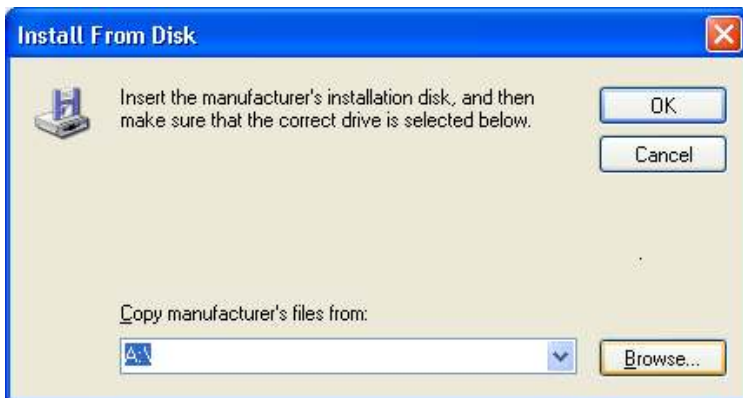
On the third screen select Don't search. I will choose the driver to install, click Next



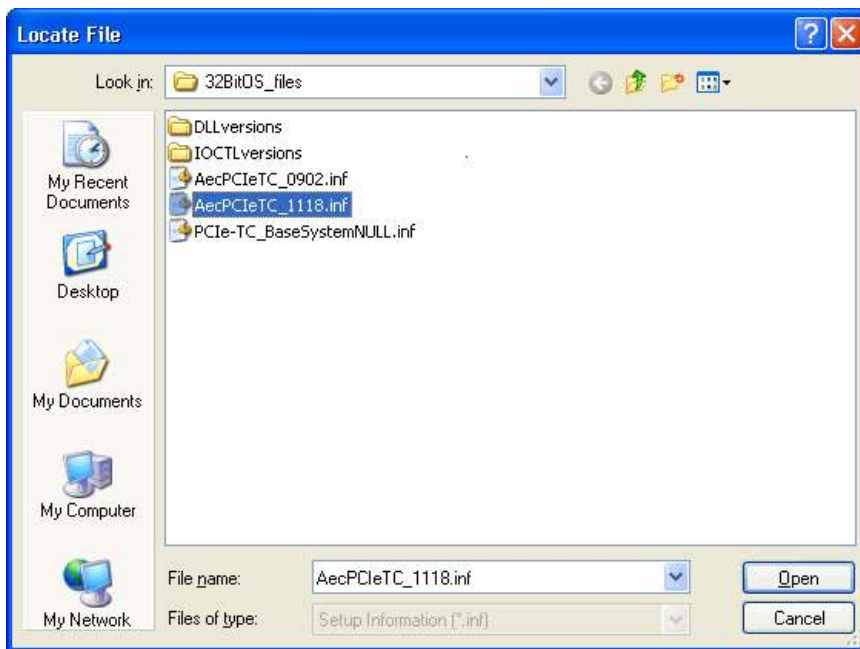
On the next screen click on Have Disk, click Next



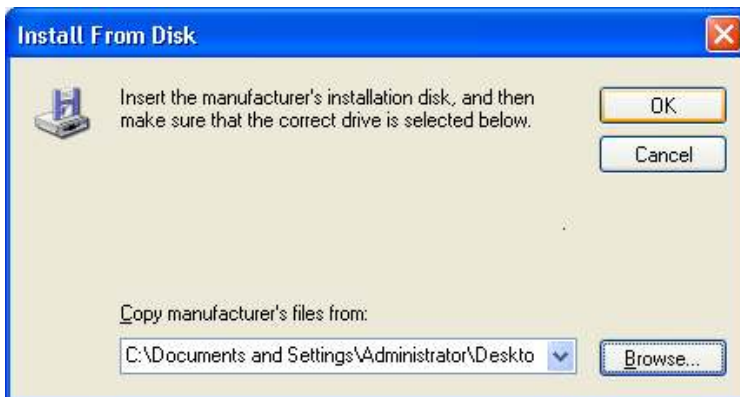
Browse to where the Driver is located.



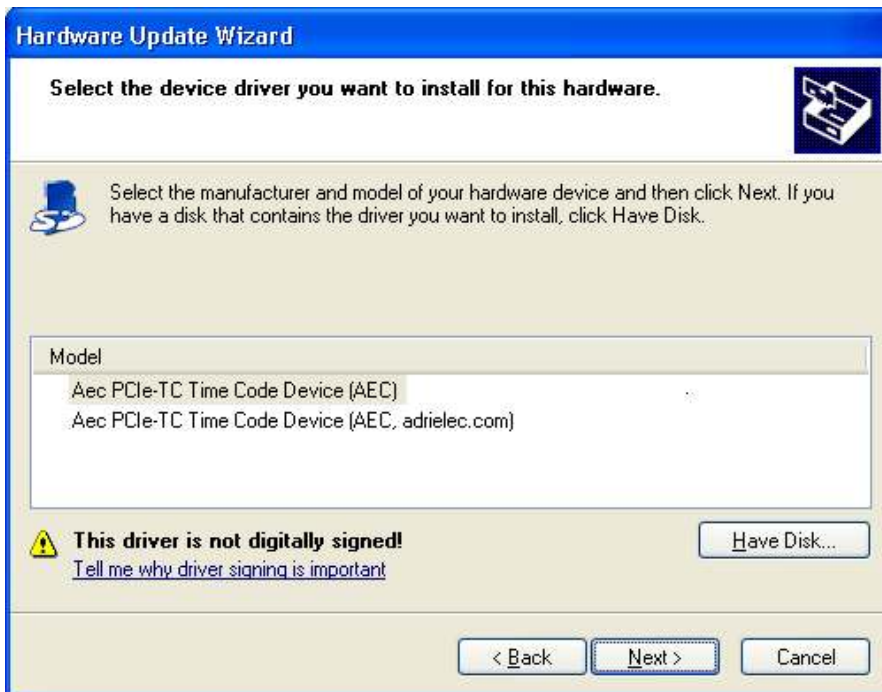
For XP Pro 32 bit systems the driver is located in the Adrienne Driver directory that you previously downloaded and unzipped, this is located in the 32BitOS_files directory. The Driver to use is the AecPCleTC_1118.inf. select this driver and click Open



On the next screen click OK



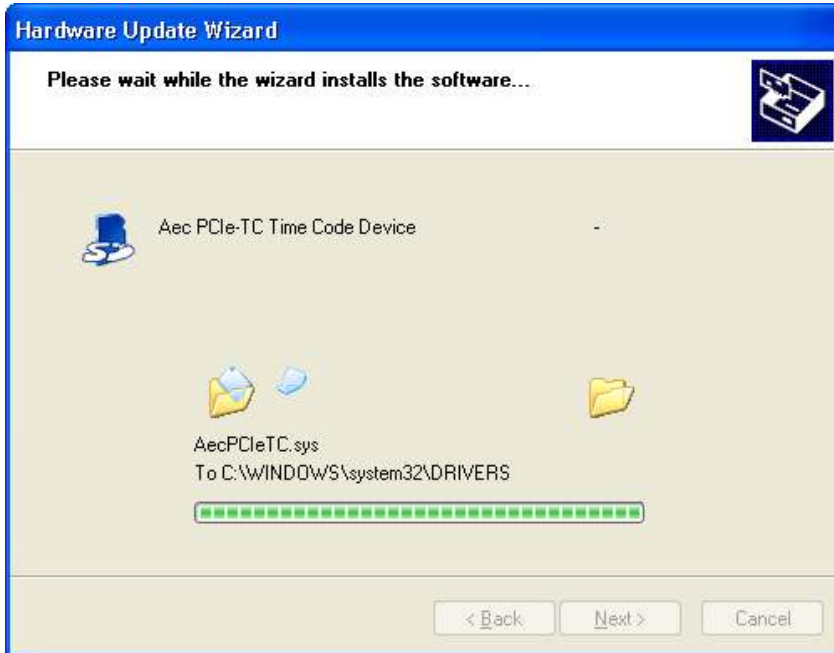
Click next on the next screen



Click Yes to install the Driver



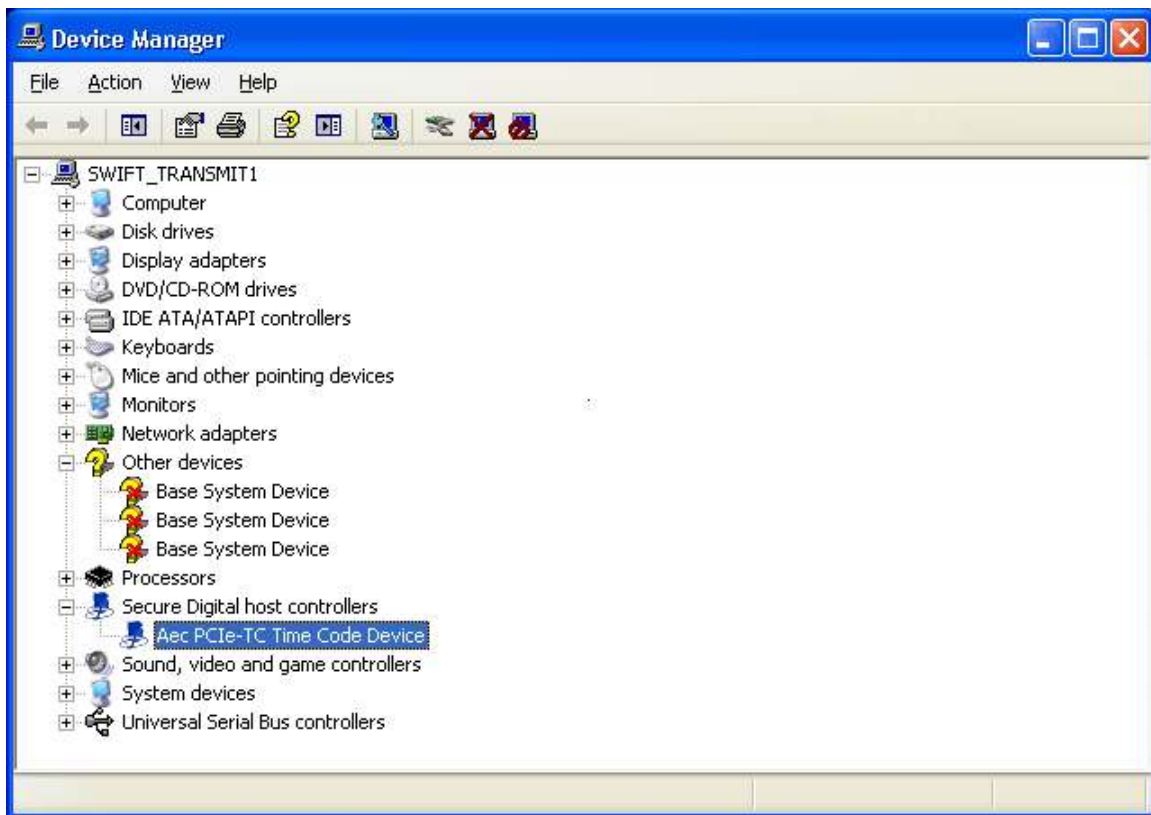
Wait for the Driver to Install



Click Finish when prompted



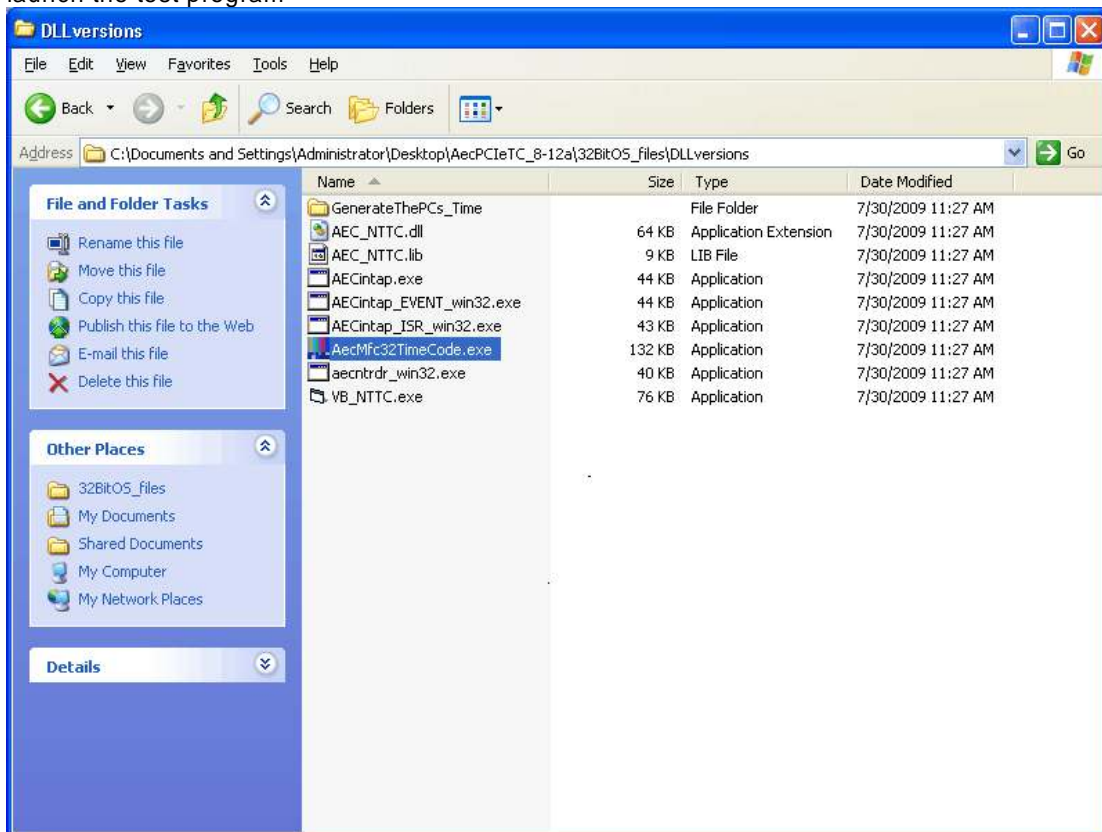
You should now see the SD Host controller renamed to Aec PCIe-TC Time Code Device in the Device Manager



Testing the Adrienne PCIe time Code card.

Connect a suitable time code source to the Adrienne Time Code Card.

Inside the Driver directory that you downloaded and unzipped, there is a TC test program that Adrienne supplies. This is located in the 32BitOS_files\DLL versions directory. Click on this to launch the test program



Click on Run to run the program



You should see Time Code advancing in the upper left hand corner (circled here in red)

